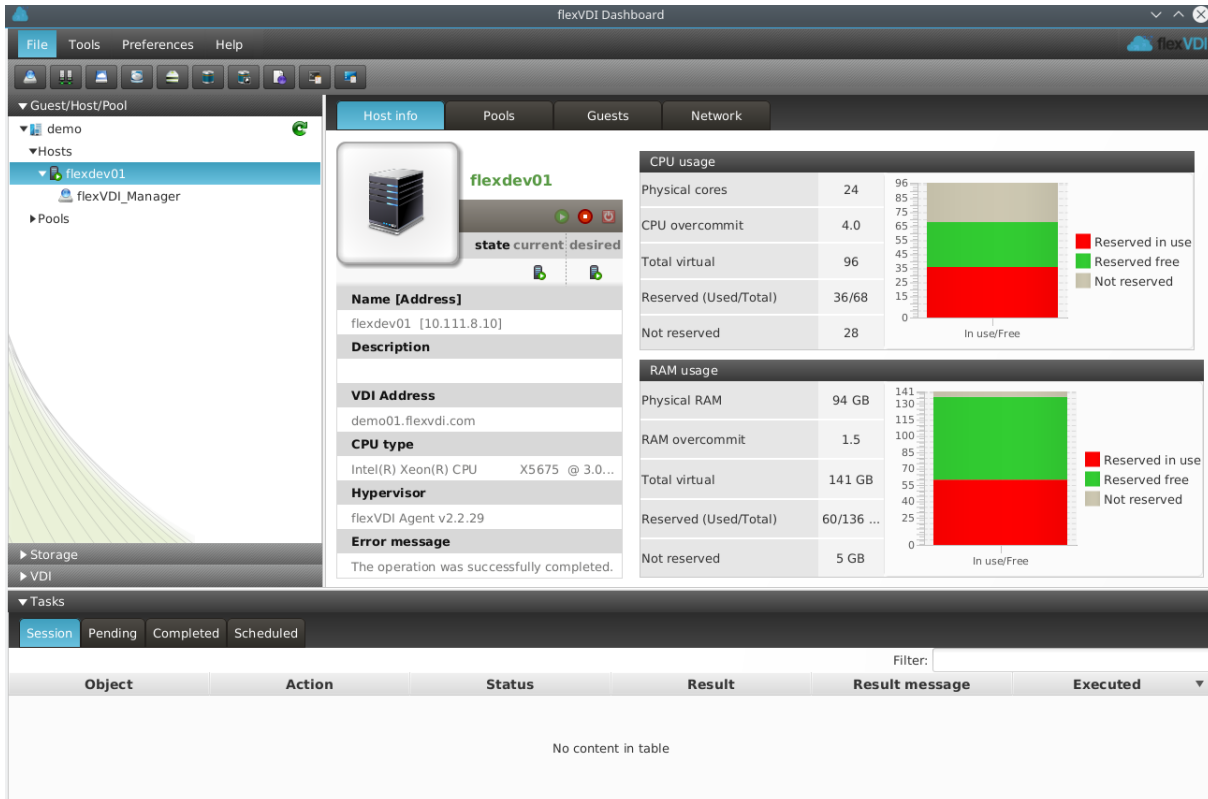


The main window

Once you have established the connection, the following window will be displayed:



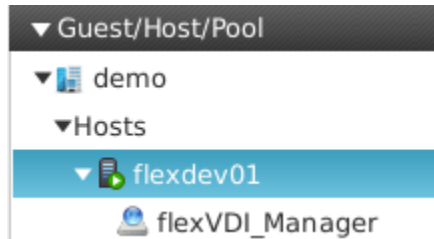
The *flexVDI Dashboard* window is divided in three main areas: left, right and bottom.

Left area: The tree view

This area lists the objects of the platform, in a hierarchical way, and grouped in three sections:

- Guest/Host/Pool: As its name states, lists the guests, hosts and pools of the platform. The icon next to each object reflects its state: disabled, running, paused, ...
- Storage: This section contains the different storage objects.
- VDI: Finally, this section lists the Terminal and Desktop Policies, which describe how users are eventually mapped to their desktop.

"Guest/Host/Pool" is initially selected, as you can see in the image above. The root of the tree is the name you entered when you configured the Manager connection parameters. If you unfold it, two elements are revealed: Hosts and Pools. After a fresh install, you will see a list with one host and no pool:

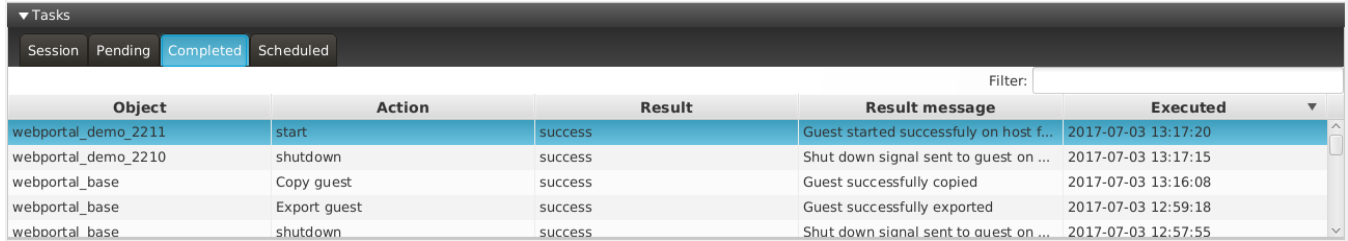


The *Host* should have a green round icon with a white arrow inside, meaning that its status is "Running". If the *Host* is not active, its icon will show a crossed out red circle. The tree also displays that the *flexVDI Manager* is running on that *Host*.

Right area: The details view

This area shows detailed information about the different objects of the platform. It is usually divided into several tabs, that contain different views of the object at hand. For instance, in the previous image we can see information about the *Host*. We will see other examples during this guide.

Bottom area: The tasks view



Object	Action	Result	Result message	Executed
webportal_demo_2211	start	success	Guest started successfully on host f...	2017-07-03 13:17:20
webportal_demo_2210	shutdown	success	Shut down signal sent to guest on ...	2017-07-03 13:17:15
webportal_base	Copy guest	success	Guest successfully copied	2017-07-03 13:16:08
webportal_base	Export guest	success	Guest successfully exported	2017-07-03 12:59:18
webportal_base	shutdown	success	Shut down signal sent to guest on ...	2017-07-03 12:57:55

The lower area provides information about *Tasks*. A task is a detailed record of an action requested to flexVDI Dashboard, such as "Create a new Guest called Test".

It consists of four tabs:

- **Session:** It shows all the tasks, past and present, that have been created since the Dashboard connected to the Manager.
- **Pending:** It shows tasks started but not finished yet. Some actions, like copying a disk image, which usually involves copying a lot of information from/to disk, may take a while to complete, and will appear on this tab until they end.
- **Completed:** It shows the history of all tasks that have been completed. This includes tasks initiated in previous sessions.
- **Scheduled:** Not implemented yet.

All of them contain a table with the following information for each task:

- **Object:** Object of the platform targeted by the task.
- **Action:** Action performed by the task (Run a guest, delete an image, ...)
- **State:** Either running or finished.
- **Result:** Success or error. Additionally, if a task results in an error, its background changes to red.
- **Result message:** Any message returned by the task once finished. Most useful on error.
- **Time of execution**

If you double-click on a task, it will open a dialog with its information. Use it when the result message is too long to be correctly displayed in the table.

Additionally, the task list can also be filtered with the input box in the upper right corner. Enter a word to filter by and hit return.

The task log can be deleted when no longer useful. To do so, click on the task with the right mouse button, and click "Delete" to delete one task, or "Delete completed" to delete all completed tasks.

